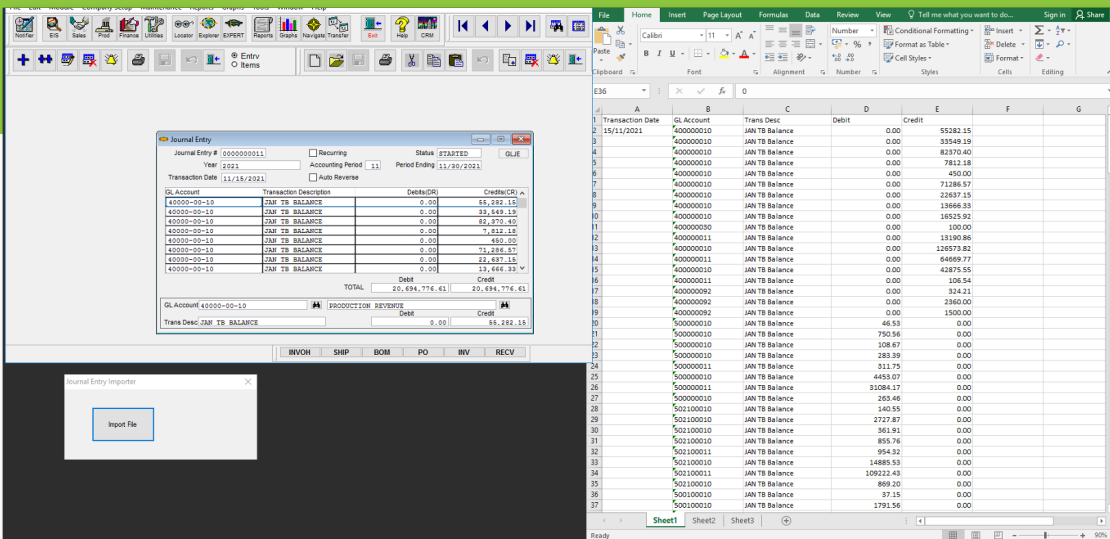


## Labor Entry

- Replacement for VFP M2M® Barcode
- Runs in Chrome or Edge Browser
- Installs into IIS Server on M2M® Server; Runs on local intranet
- Able to run on any browser device
- Scans barcodes from M2M® BC reports
- Use wired or Bluetooth barcode devices
- No posting required



## Journal Entry Updater

- Excel template for data upload
- Validates balances and accounts to M2M® before create JE in Started status
- Works with version 5.01-7.51
- C#.NET application
- Simple installation

GLREVIEW [GLREVIEW - Extended]

Start Date: 12/01/2021  
End Date: 12/31/2021

Account	Change	Debit	Credit	
1011000		0.00000	5,441.85000	0.00000
1021000		0.00000	93.95000	0.00000
1030514		0.00000	2,722.44000	0.00000
2032000		0.00000	0.00000	4,900.00000
4010014		0.00000	0.00000	635,80000
5010014		0.00000	369,60000	0.00000
5020014		0.00000	49,68000	0.00000
5030014		0.00000	99,28000	0.00000
5085014		0.00000	0.00000	3,241.00000

## General Ledger Review

- Replacement for VFP GLVIEW
- Same “look and feel” as GLVIEW
- .NET Customization for 7.5x

Product Configurator | Products | Features | Options | Outlines | Rules | Order Entry

### Visual Rules - USA

Location: USA | Product: FAN - CUSTOM FAN | Go To: Outlines

Filter | New Rule

If Selected Feature	Has these Options	Then this Feature	Action	These Options	Edit / Delete
SIZE - FAN SIZE	20IN	SIZE - FAN SIZE	Auto-Select	20IN	
SIZE - FAN SIZE	20IN	SPEED - MOTOR RPM	Auto-Select	2500	

If Feature: BLADES - NUMBER OF BLADE: | Has These Options: \* ANY OPTION \* | Save | Cancel

Then for Feature: SIZE - FAN SIZE | Action: Auto-Select | \* Required

These Options: 20IN - 20 INCH WINDOW FAN

Click the option boxes to edit items.

## Product Configurator

- Replacement for VFP Product Configurator
- Same “look and feel” as Product Configurator
- C#.NET Visual Studio Project available for customization